



Winter Holiday Safety

Winter holidays are a time for families and friends to get together. But that also means a greater risk for fire. Following a few simple tips will ensure a happy and fire-safe holiday season.



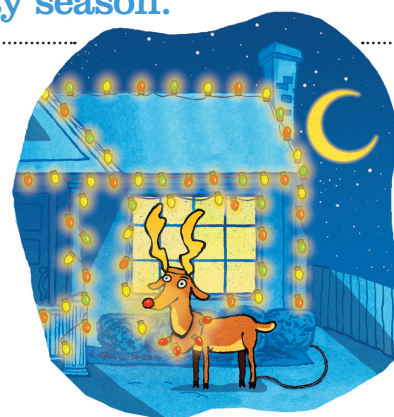
HOLIDAY DECORATING

- » Be careful with holiday decorations. Choose decorations that are flame resistant or flame retardant.
- » Keep lit candles away from decorations and other things that can burn.
- » Some lights are only for indoor or outdoor use, but not both.
- » Replace any string of lights with worn or broken cords or loose bulb connections. Connect no more than three strands of mini light sets and a maximum of 50 bulbs for screw-in bulbs. Read manufacturer's instructions for number of LED strands to connect.
- » Use clips, not nails, to hang lights so the cords do not get damaged.
- » Keep decorations away from windows and doors.



HOLIDAY ENTERTAINING

- » Test your smoke alarms and tell guests about your home fire escape plan.
- » Keep children and pets away from lit candles.
- » Keep matches and lighters up high in a locked cabinet.
- » Stay in the kitchen when cooking on the stovetop.
- » Ask smokers to smoke outside. Remind smokers to keep their smoking materials with them so young children do not touch them.
- » Provide large, deep ashtrays for smokers. Wet cigarette butts with water before discarding.



Before Heading Out or to Bed

Blow out lit candles when you leave the room or go to bed. **Turn off** all light strings and decorations before leaving home or going to bed.

FACTS

- ❗ **Two of every five** home decoration fires are started by candles.
- ❗ **Nearly half** of holiday decoration fires happen because decorations are placed too close to a heat source.



Your Source for **SAFETY** Information

NFPA Public Education Division • 1 Batterymarch Park, Quincy, MA 02169

www.nfpa.org/education

Christmas Tree Safety



As you deck the halls this holiday season, be fire smart. A small fire that spreads to a Christmas tree can grow large very quickly.



PICKING THE TREE

- » Choose a tree with fresh, green needles that do not fall off when touched.



PLACING THE TREE

- » Before placing the tree in the stand, cut 2" from the base of the trunk.
- » Make sure the tree is at least three feet away from any heat source, like fireplaces, radiators, candles, heat vents or lights.
- » Make sure the tree is not blocking an exit.
- » Add water to the tree stand. Be sure to add water daily.

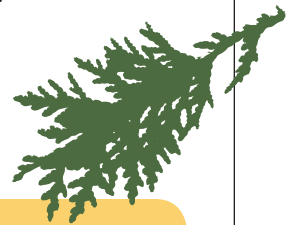


LIGHTING THE TREE

- » Use lights that have the label of a recognized testing laboratory. Some lights are only for indoor or outdoor use.
- » Replace any string of lights with worn or broken cords or loose bulb connections. Connect no more than three strands of mini string sets and a maximum of 50 bulbs for screw-in bulbs. Read manufacturer's instructions for number of LED strands to connect.
- » Never use lit candles to decorate the tree.
- » Always turn off Christmas tree lights before leaving home or going to bed.

After Christmas

Get rid of the tree after Christmas or when it is dry. Dried-out trees are a fire danger and should not be left in the home or garage, or placed outside against the home. Check with your local community to find a recycling program. Bring outdoor electrical lights inside after the holidays to prevent hazards and make them last longer.



FACTS

- ! **One** of every three home Christmas tree fires are caused by electrical failures.
- ! Although Christmas tree fires are not common, when they do occur, they are more likely to be serious.
- ! A heat source too close to the tree causes roughly **one in every six** of the fires.



Your Source for SAFETY Information

NFPA Public Education Division • 1 Batterymarch Park, Quincy, MA 02169

www.nfpa.org/education